



Senegal EITI mainstreaming project

Systems for EITI mainstreaming

Alioune Badara Paye

EITI Senegal

24 March 2021

Overview



- EITI Mainstreaming is about encouraging and recognising countries that make transparency an integral feature of their governance and management of the extractive industries.
- EITI implementing countries are increasingly making the information required by the EITI Standard available through government and corporate reporting systems (databases, websites, annual reports, portals etc).
- This helps to ensure that this data is timely, reliable and accessible.
- In 2016 the EITI Standard was revised to encourage these efforts.

Overview



Mainstreaming project funded by the World Bank EGPS trust fund. RDF was implementing partner. November 2019 to June 2020.

- Departments providing data
- Integration with Fusion
- Online submissions
- Audits using Fusion
- Public data disclosure
- Lessons learnt
- Going forward

Departments providing data



1. Directorate General of Taxes and Domains (DGID)
2. Directorate General of Customs (DGD)
3. Directorate of Mines and Geology (DMG)
4. Directorate General of Public Accounting and Treasury (DGCPT)
5. Directorate of the Environment and Classified Establishments (DEEC)
6. Directorate of Water, Forests, Hunting and Soil Conservation (DEFCCS)
7. Social Security Fund (CSS)
8. Senegalese pension provident institution (IPRES)
9. Directorate of Hydrocarbons (DH)

Integration with Fusion



- Automated data transfer
 - DGCPT ASTER system
 - DGD GAINDE system
 - DGID Sigtas system
- Semi-manual
 - DH : monthly, soon automatic
 - DMG : monthly
 - IPRES : quarterly
 - CSS : quarterly
 - DEEC : quarterly
 - DEFCCS : quarterly

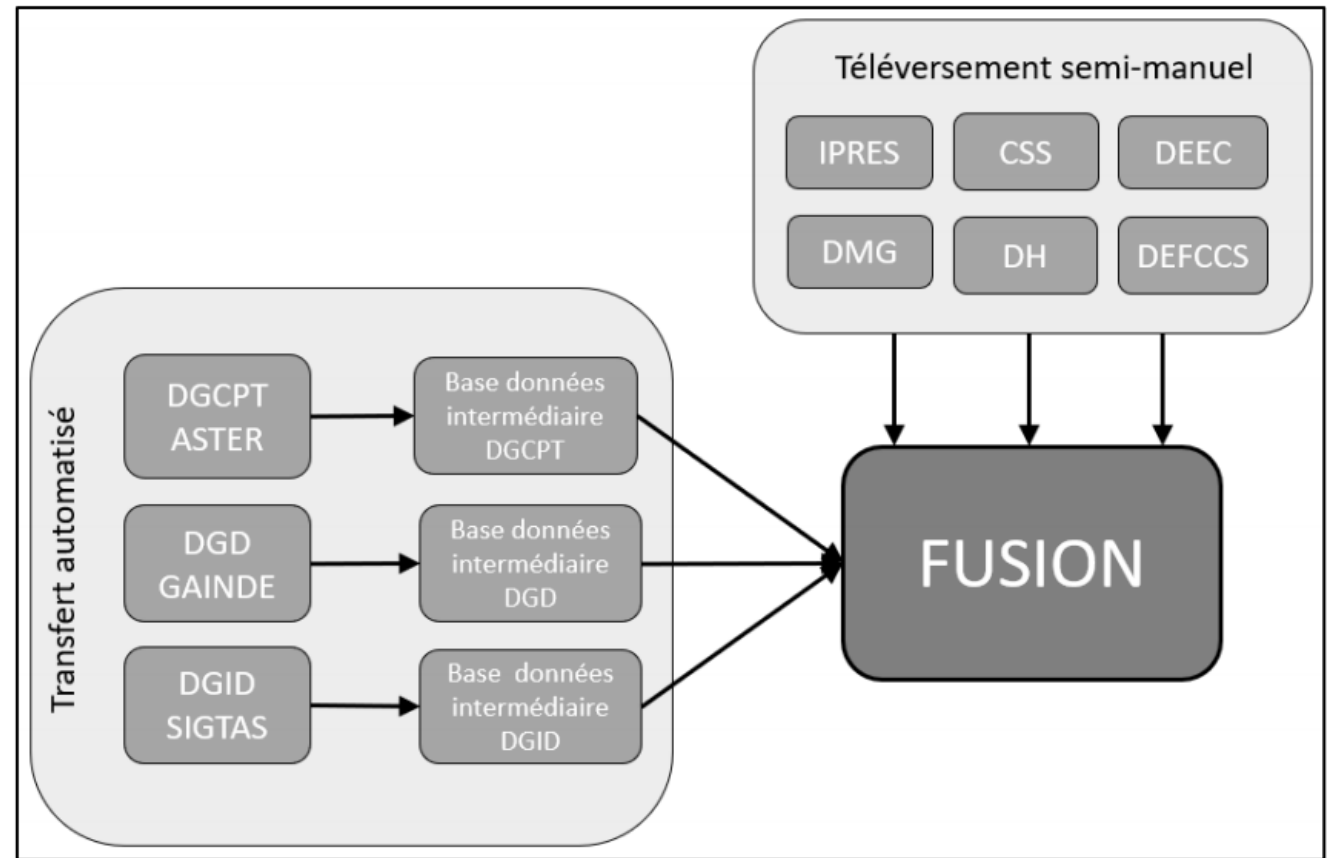


Fig.2: Schematic Diagram of Transfer Types

Online Submissions



- Transform EITI declaration forms into digital forms in GovIn
- Submissions started for the year.....
- X companies submitted online

Form	Filling in method
Fact sheet (Fiche Signalétique)	GovIn online form
Economic Contribution (Contribution Economique)	GovIn online form
Declaration form (Formulaire de Déclaration)	GovIn online form
Payments details (Détail des Paiements)	Upload Excel file
Production (Production)	Upload Excel file
Exports and sales (Exportations et Ventes)	Upload Excel file
Capital structure (Structure du Capital)	GovIn online form
Actual beneficiaries (Bénéficiaires Effectifs)	GovIn online form
Social and environmental payments (Paiements Sociaux et Environnementaux)	Upload Excel file
Barter transactions / integrated projects (Transactions troc / projets intégrés)	GovIn online form
Loans and Grants (Prêts et Subventions)	GovIn online form
Allocation and Transfer Procedures (Procédures d'Attribution et de Transfert)	GovIn online form
Purchase and Sale of Raw Materials (Achat et Vente des Matières Premières)	Upload Excel file
Public participation (Participation Publique)	GovIn online form
Quasi Fiscal Expenses (Dépenses Quasi Fiscales)	GovIn online form
Final certification / signature (Attestation Finale / Signature)	Upload file

Fusion



- All data in one place:
 - 9 departments providing datasets
 - EITI declaration online submissions
- Company profiles
 - Show all transactions related to a company

The screenshot shows the 'rd FUSION' web application interface. The left sidebar contains a navigation menu with the following items: SERVICES, ITIE - Déclarations GovIn, ITIE, DEEC, CSS, DH, DEFCCS, Directions Minières (highlighted), DGCPPT, DGD, DGID, and IPRES. The main content area displays a table titled 'Liste: Directions Minières'. The table has columns for NINEA, Code, Nom, Parties, Type, Substance, Statut, Région, Date de Demande, Date d'Octroi, Add custom date, and Superfici. The table contains 6 rows of data, with the last row highlighted. The bottom of the page shows pagination information: 'Affichage de l'élément 1 à 10 sur 604 éléments' and 'Précédent 1 2 3 4 5 ... 61 Suivant'.

NINEA	Code	Nom	Parties	Type	Substance	Statut	Région	Date de Demande	Date d'Octroi	Add custom date	Superfici
000016627	D2006-359	Bargny	Societe de Commercialisation du Ciment (SOCOCIM) (100%)	CM	actif	calcaire	Dakar	03/02/2006	19/04/2006	19/04/2031	4.6153
000016627	D2006-361	Pout	Societe de Commercialisation du Ciment (SOCOCIM) (100%)	CM	actif	calcaire	Thies	03/02/2006	19/04/2006	18/04/2031	4.1711
000022955	D1999-1020	Tobene Nord_ICS	INDUSTRIES CHIMIQUES DU SENEGAL (100%)	CM	actif	phosphate de chaux	Thies	10/07/1998	19/10/1999	19/10/2024	247.959
000022955	D1999-1021	Tobene Sud_ICS	INDUSTRIES CHIMIQUES DU SENEGAL (100%)	CM	actif	phosphate de chaux	Thies	10/07/1998	19/10/1999	18/10/2024	18.414
000022955	A001282	Gossas	INDUSTRIES CHIMIQUES DU SENEGAL (100%)	PR	phosphate de chaux	actif	Kaolack	04/01/2012	09/02/2012	29/11/2021	926.668
000023896	D2015-1385	Faleme	Societe des Mines de Fer de la Faleme (MIFERSO)	CM	actif	fer	Kedougou	21/02/2015	16/09/2015	16/09/2040	1331.757

Audits using Fusion

- Finding discrepancies
- Risk indicators, comparing data from different datasets

	Left Dataset	Right Dataset
Service	CSS	ITIE - Déclarations GovIn
Format	Détails paiements (Périmètre)	GovIn Paiements CSS
Match	NINEA	Ninea de la société déclarante
Compare	Montant CFA - (100.0%)	Montant FCFA - (100.0%)

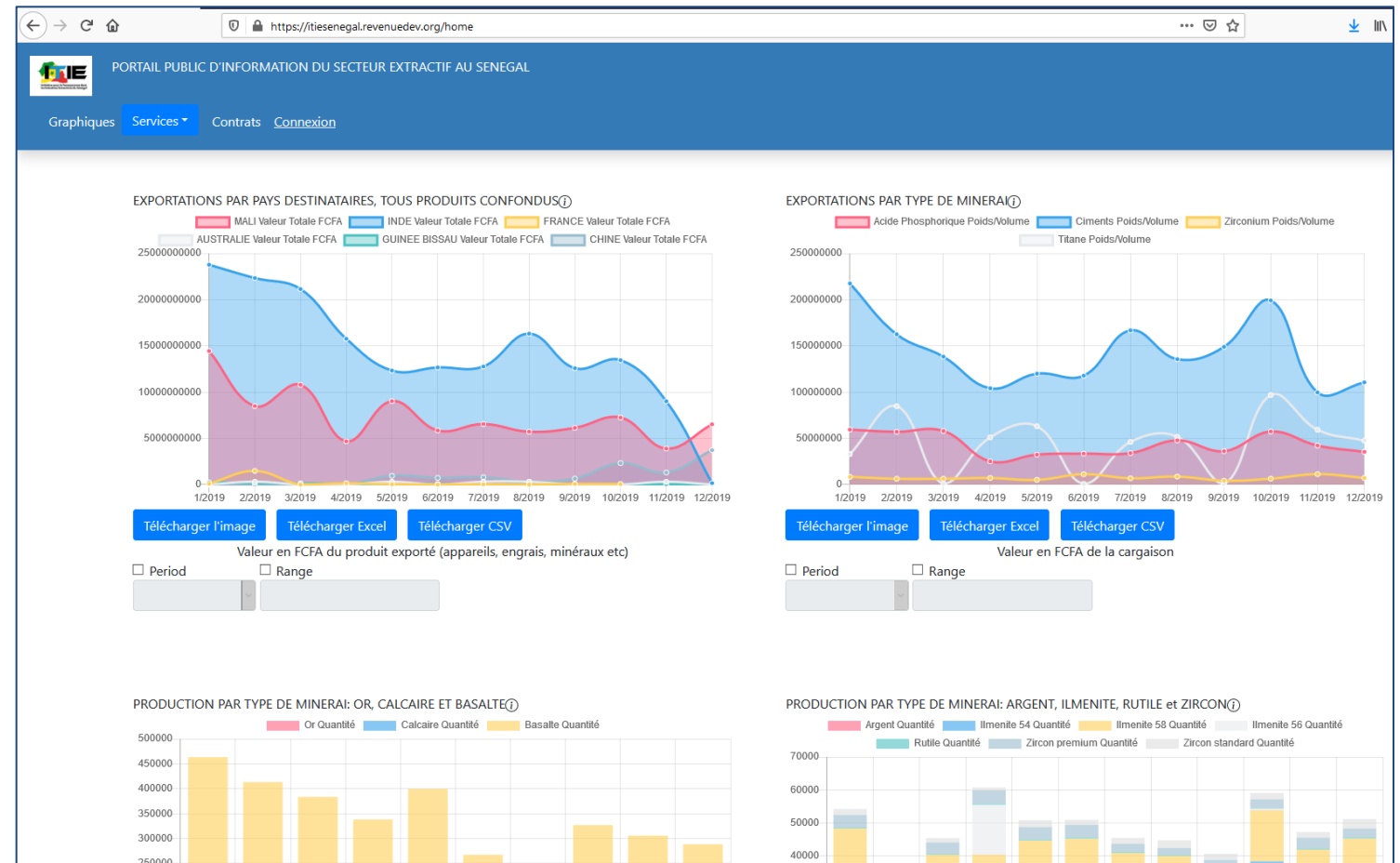
Show entries

Match	Company Name	value1	value2	Difference Absolute Value (value1-value2)	% Difference Absolute Value (value1-value2)
000022955	INDUSTRIES CHIMIQUES DU SENEGAL	206,845,059	206,845,055	4	0
000023896	SOCIETE DES MINES DE FER DU SENEGAL ORIENTAL UFG3/348/R	1,013,040	1,013,040	0	0
000196784	COGECA BG-CGE 061	46,922,350	82,922,350	36,000,000	43.41
000325995	LES CIMENTS DU SAHEL SA	130,032,195	130,032,195	0	0
000415770	Fortesa International Senegal	12,750,040	12,750,040	0	0
002464410	SABODALA MINING COMPANY SARL	1,171,800	1,171,800	0	0

Public Portal



- Production data
 - Type of mineral
 - Producer
 - Value
- Exports data
 - By destination
 - Type of mineral



<https://itiesenegal.revenuedev.org>

Public Portal



- Datasets from 9 departments
- Filter and search
- Download to Excel

PORTAIL PUBLIC D'INFORMATION DU SECTEUR EXTRACTIF AU SENEGAL

Graphiques Services Contrats Connexion

Institut Prévoyance Retraite (IPRES)
Direction Générale des Impôts et des Domaines (DGID)
Caisse de Sécurité Sociale (CSS)
Direction Des Eaux Et Forêts, Chasses Et Conservation Des Sols (DEFCCS)
Directions Minières (DMG/DPPM)
Direction Générale des Douanes (DGD)
Société des Pétroles du Sénégal (PETROSEN)
Direction Générale de la Comptabilité et du Trésor (DGCPT)
Conventions
Direction des Impôts

Télécharger en Excel

Nomenclature des Flux	Montant FCFA	Projet	Région			
search	search	search	search			
000016627	SOCOCIM	20/05/2019	Appui Institutionnel	116875979	Bargny	DAKAR
000016627	SOCOCIM	29/10/2019	REDEVANCE MINIERE	116875979	Bargny	DAKAR
000025850	SODEVIT	18/11/2019	Taxe extraction	24401269	Bandia	THIES
000025850	SODEVIT	30/07/2019	Taxe extraction	22776210	Bandia	THIES

<https://itiesenegal.revenue-dev.org>

Lessons learnt



- It is possible !!
- Tax Identification Numbers
 - Key for integration, unique identifier
 - Departments needs to be able to lookup and verify TINs in taxpayer registry, so they all refer to the company in the same way

Plans going forward



- Improve taxpayer registry, allow departments to verify TIN from registry
- Give the possibility to companies to declare online more regularly, instead of one big exercise every year
- Tracking expenditures through the Government budget. For future oil and gas revenues management, a law is being prepared.

Implementing countries should indicate which extractive industry revenues, whether cash or in kind, are recorded in the national budget. Where revenues are not recorded in the national budget, the allocation of these revenues must be explained, with links provided to relevant financial reports as applicable, e.g., sovereign wealth and development funds, subnational governments, state-owned enterprises, and other extra-budgetary entities.

- Automate more the transmission of data from institutions, for the moment someone still clicks on a button
- Automate the disclosure so that the portal is updated more often
- Stop using the independent evaluator ?

Questions and Answers



Please type your question in the chat window